



**GESTRA® Steam Trap**

**ECONoline®**

**BK 35**

International Patents



Issue Date: 6/01

**Steam Trap**

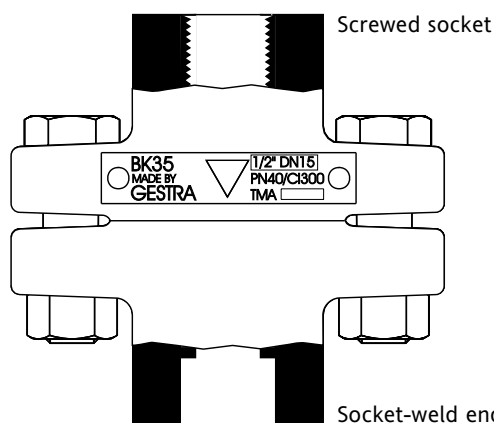
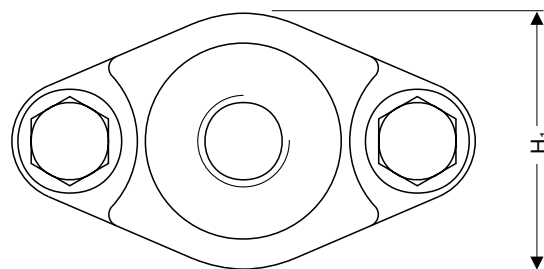
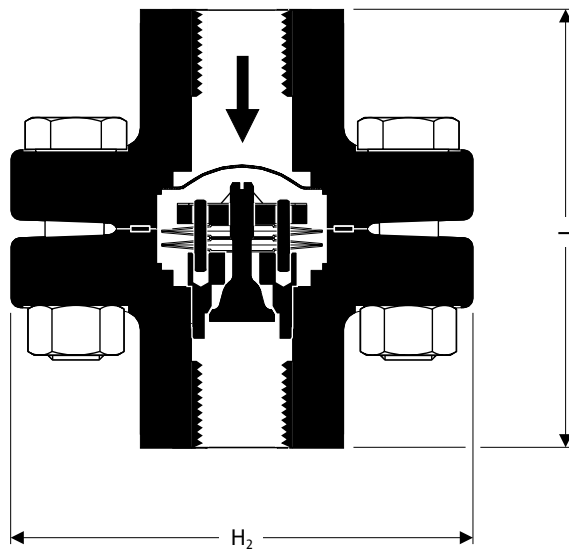
**PN 40**

**DN 15, 20, 25**

**1/2", 3/4", 1"**

**BK 35**

**A1**



### System Description

Thermostatic/thermodynamic steam trap with corrosion-resistant regulator unaffected by waterhammer (Duo stainless steel regulator). Automatic air-venting is provided both during start-up and during normal operation. The regulator is interference fitted and cannot be replaced. The BK 35 features an internal strainer. Asbestos-free body gasket (graphite). Installation in any position.

### Function

The steam trap opens within its temperature/pressure rating at any pressure few degrees below the boiling point. The trap closes immediately before the boiling point is reached.

### Technical Data

Max. service pressure	[barg] [psig]	32 464	22 319	21 305
Related temperature	[°C] [°F]	250 482	385 725	400 752
Max. differential pressure (inlet pressure minus outlet pressure)		22 barg / 319 psig		

Materials	DIN reference	ASTM equivalent
Body, cover	Forged steel C 22.8 (1.0460)	A 105
Bolts	Alloy steel 24 CrMo 5 (1.7258)	A 193 B 7
Other internals	Stainless steel	

### Connections

#### Screwed sockets

■ Screwed BSP and NPT

#### Socket-weld end

Dimensions and weights		End connections					
		Socket-weld end			Screwed socket		
Nominal sizes	[mm] [inch]	15 1/2	20 3/4	25 1	15 1/2	20 3/4	25 1
Dimensions	L	95			95		
	H <sub>1</sub>	54			54		
	H <sub>2</sub>	100			100		
Approx. weight	[kg]	1.8	1.8	1.8	1.5	1.4	1.3

# A<sub>1</sub>

BK 35

Steam Trap  
PN 40  
DN 15, 20, 25  
1/2", 3/4", 1"



## GESTRA GmbH

P.O. Box 10 54 60, D-28054 Bremen  
Hemmstraße 130, D-28215 Bremen  
Tel. +49 (0) 421 35 03-0, Fax -393  
E-mail gestra.gmbh@gestra.de  
Internet www.gestra.de



Flow Control Division

### Capacity Chart

The chart shows the maximum capacities for hot and cold condensate.

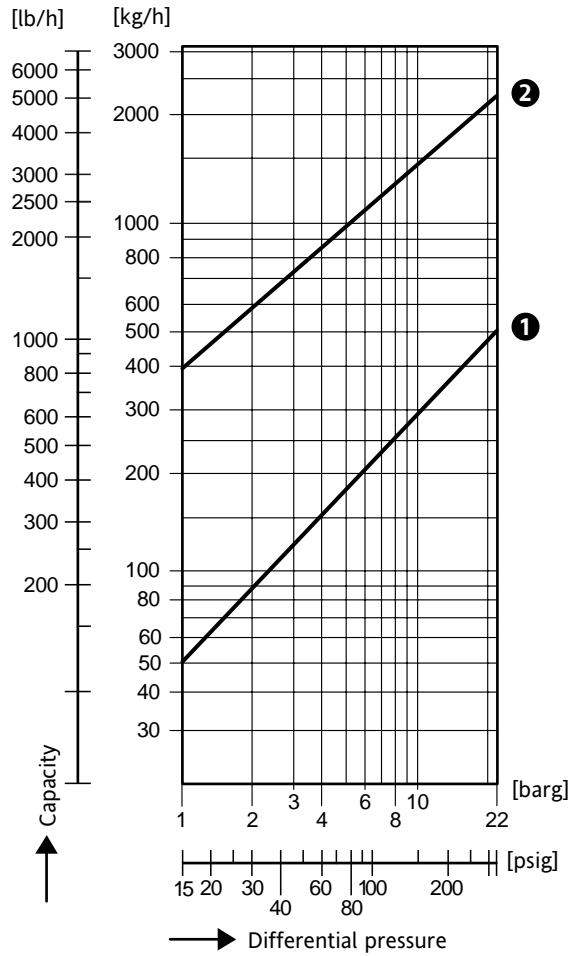
#### Curve 1

This curve indicates the max. capacity of hot condensate that the BK 35 can discharge with virtually no banking-up.

#### Curve 2

This curve shows the max. capacity of cold condensate that the BK 35 can discharge (condensate temperature 20 °C).

### Capacity Chart



### ENERGY TECHNOLOGY CO., LTD.

436 Soi Onnuch 39, Sukhumvit Rd, Suanluang, Bangkok 10250

Tel : 02-721-3860 Fax : 02-721-3869

Website : www.energytechnology.co.th

E-Mail : steam@energytechnology.co.th

GESTRA AG, Bremen, Authorized distributor in Thailand

### When ordering please state:

Steam pressure, back pressure, quantity of condensate to be discharged, type, size, connections, mounting position of the trap, and details of application.

The following test certificates can be issued on request, at extra cost:

In accordance with EN 10204 -2.2 and -3.1B.

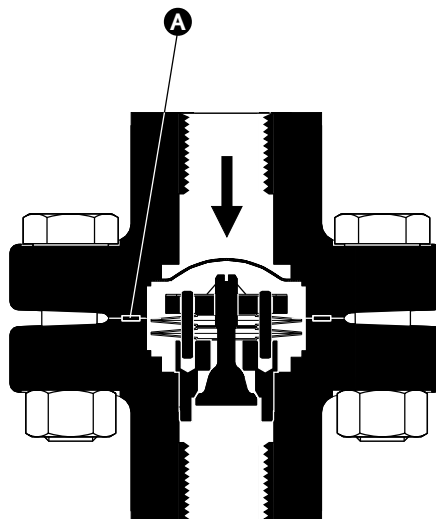
All inspection requirements have to be stated with the order. After supply of the equipment certificates can no longer be established. Charges and extent of the above mentioned certificates as well as the different tests confirmed therein are listed in our price list "Test and Inspection Charges for Standard Equipment".

For other tests and inspections than those listed above, please consult us.

Supply in accordance with our general terms of business.

Technical modifications reserved.

© 1999 GESTRA GmbH · BREMEN · Printed in Germany  
810471-01/601c



### Spare Parts

Item No.	Designation	Ref. No.
A	Gasket*) 40 x 48 x 2 made of graphite	375 159

\*) Minimum order quantity 50 items.

Contact your local dealer for smaller quantities.